

Itemized Budget
for
Public Emergency Preparedness

Addressing URGENT NEEDS for Public Safety

Richmond City Council

October 24, 2023

Soheila Bana
Cesar Zepeda

Preparedness for Public Disasters:

- Earthquake
- Wildfire

(Simultaneously)



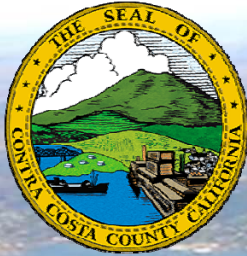
An aerial photograph of a coastal city, likely San Francisco, showing the Golden Gate Bridge, the city grid, and the bay. The text is overlaid on the image.

Goals

- Wildfire Mitigation and Prevention
- Vegetation Management & Fuel Reduction
- Earthquake Community Preparedness
- Increase Public Awareness & Preparedness

Potential Funding Sources

- General Fund
- Measure X

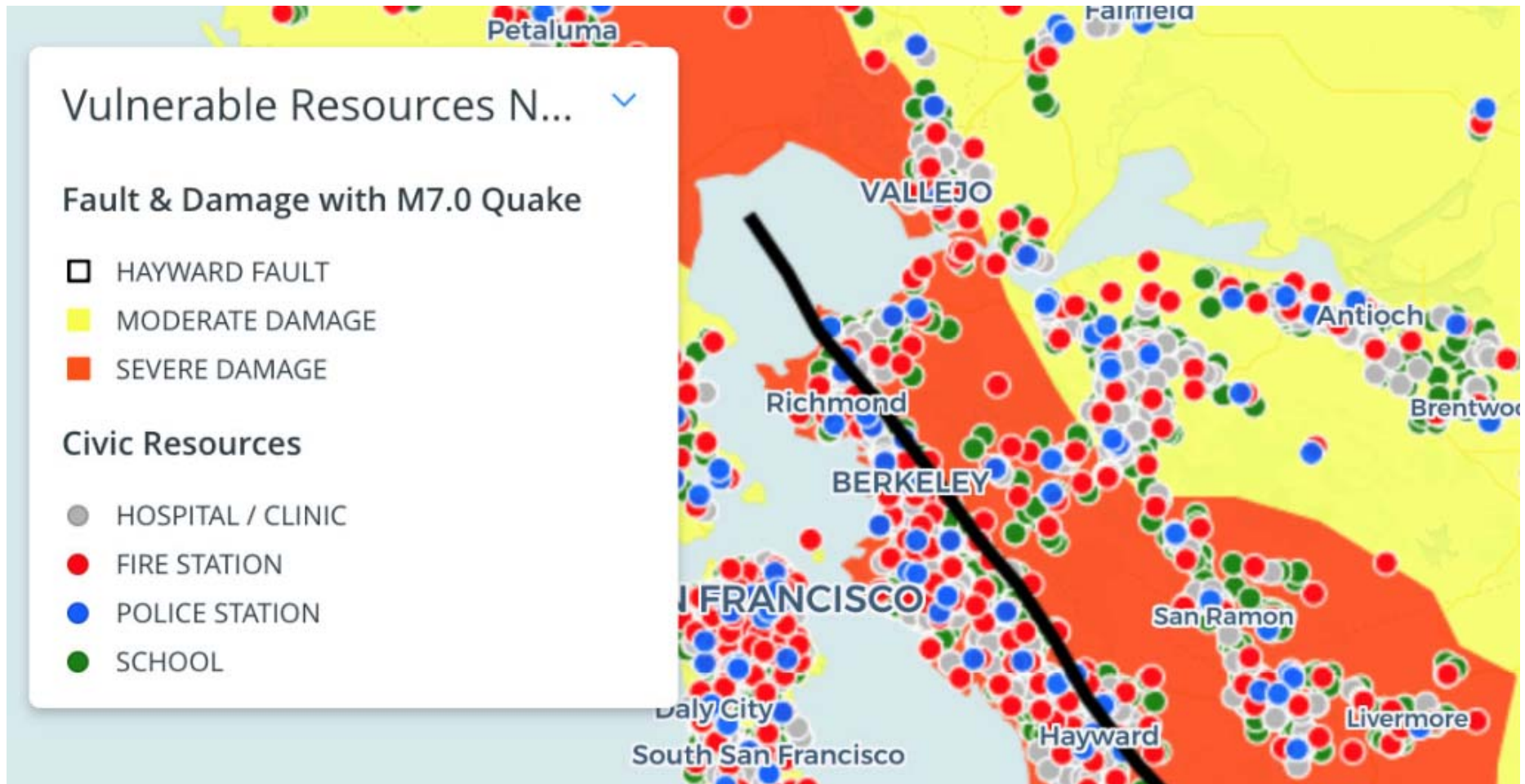


CONTRA COSTA

MEASURE X

- I) Request by Fire Dept: in collaboration with all CCC Fire Depts
- II) Request by City Manager: to Supervisor John Gioia
- III) Request by residents: fuel reduction & evacuation route clearing

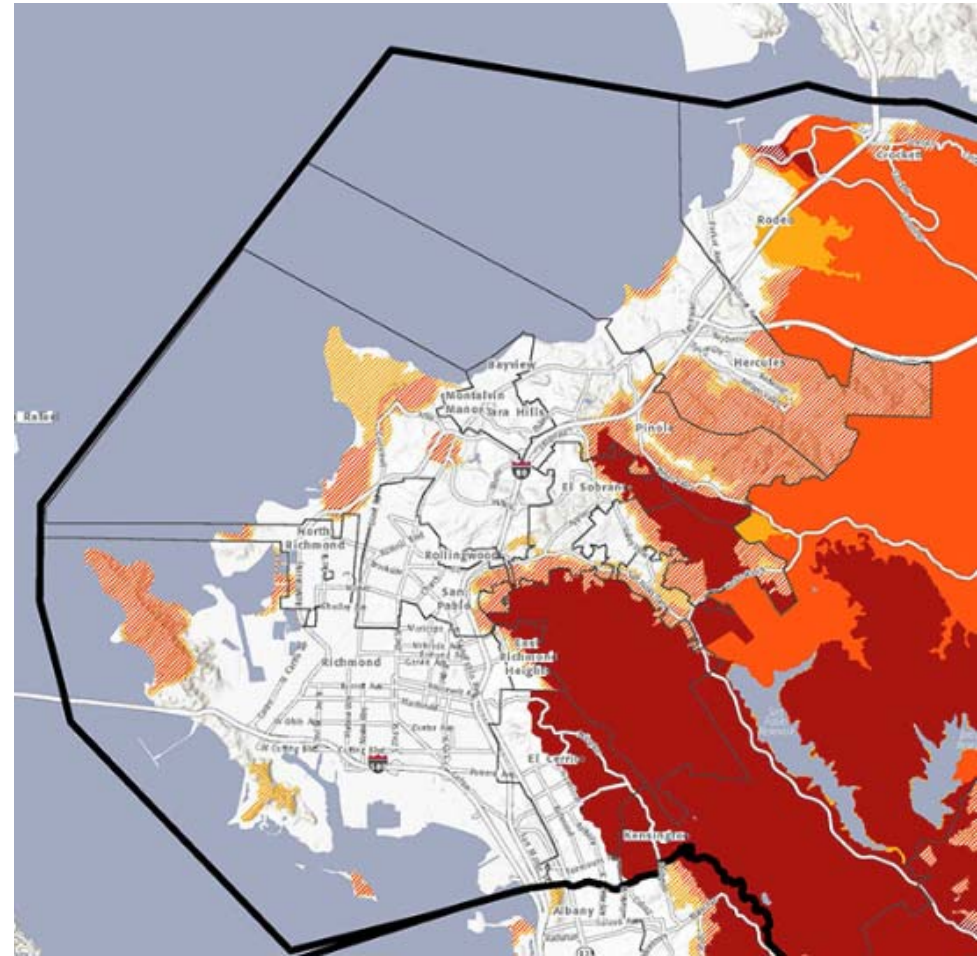
- Residents make a request
- Fire Marshal confirms the request is valid and assigns priority
- City as landowner agrees to the project
- City applies to Measure X



Source: **Are You in the Severe Damage Zone for the Bay Area's Next Big Earthquake?**
<https://www.kqed.org/science/1933064/map-are-you-in-the-severe-damage-zone-for-the-bay-areas-next-big-earthquake>

Fire Hazard Severity Zones

**Adopted / Recommended
Fire Hazard Severity Zones**
(includes areas within SRAs and LRAs)



Remote Control Mower

\$250,000

for Steep Slopes

- Vegetation Management & Fuel Reduction
- Remotely Controlled: Steep hills
- Ability to abate weed, bushes, small trees



Goat/Sheep Contract for Brush Clearing

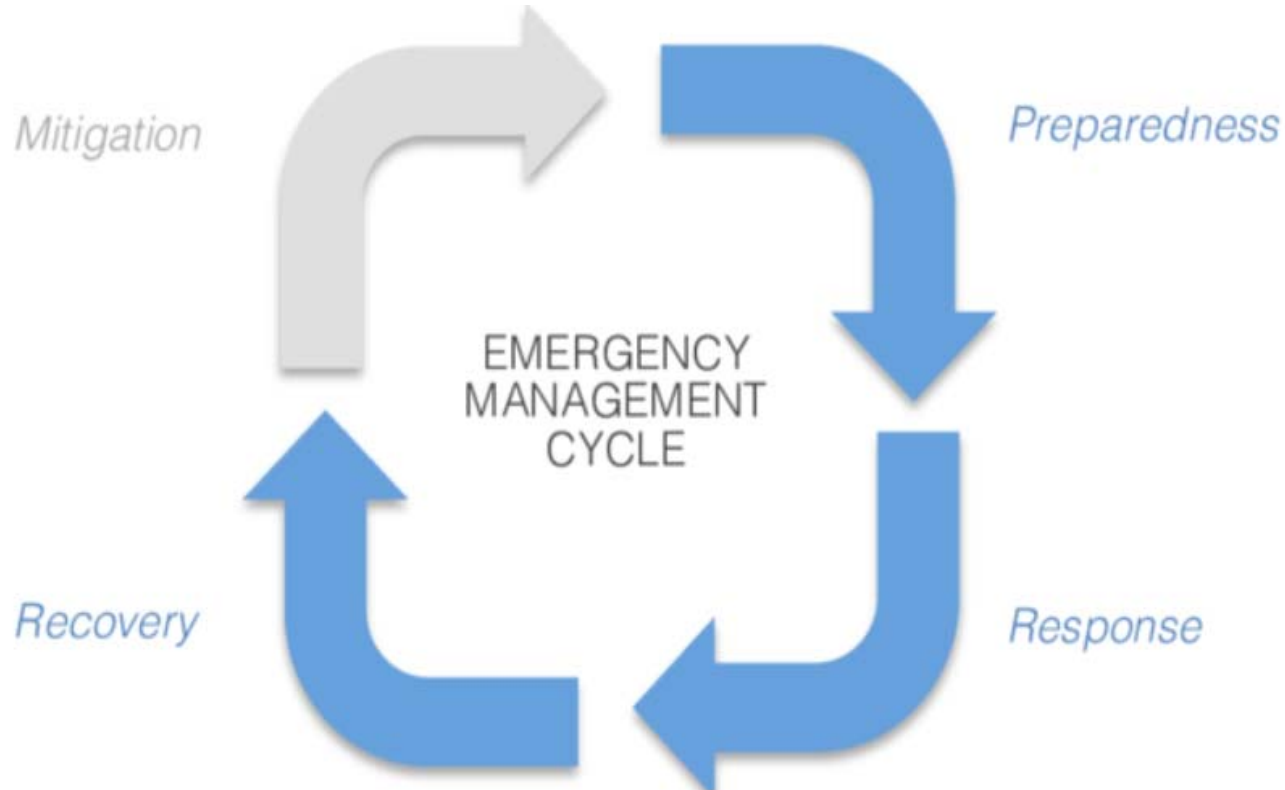
\$300,000



Citywide Public Disaster Preparedness Study & Planning

\$400,000

Each phase depends on the other to be successful!



Fire Access Lanes Accessibility

Repair/ grading,
new signs, etc.

Gate replacement
and lock
mechanism
upgrade

(Estimate)

\$400,000



Dedicated Inspector for Wildland Urban Interface - WUI

Fire Inspector II
Salary & Benefits

\$313,464



Chipper Truck and Chipper

- 11-ft chipper truck: \$120,000
- 12" midsize chipper: \$75,000

*Free Dumpster Day to
Communities*



WUI/3DI Software Management Tool

Fire Department

\$47,000 per year



Fire Station Open House & Raising Public Awareness

\$5,000
(per Fire Station)



EOC Marine Unit Fire Boat

(Estimate)
\$250,000



1989 Earthquake, San Francisco:

*The earthquake hit it knocked out water lines in the Marina, so volunteers helped run hoses from a **fire boat** that pumped water out of San Francisco bay. A portable hydrant system connected the hoses and kept water pressure high.*



Rescue Training

\$50,000



HAZMAT Training

Used to receive \$360,000
annually from the County.



CERT Training

\$15,000

- Residents
- High School Students
- City Staff

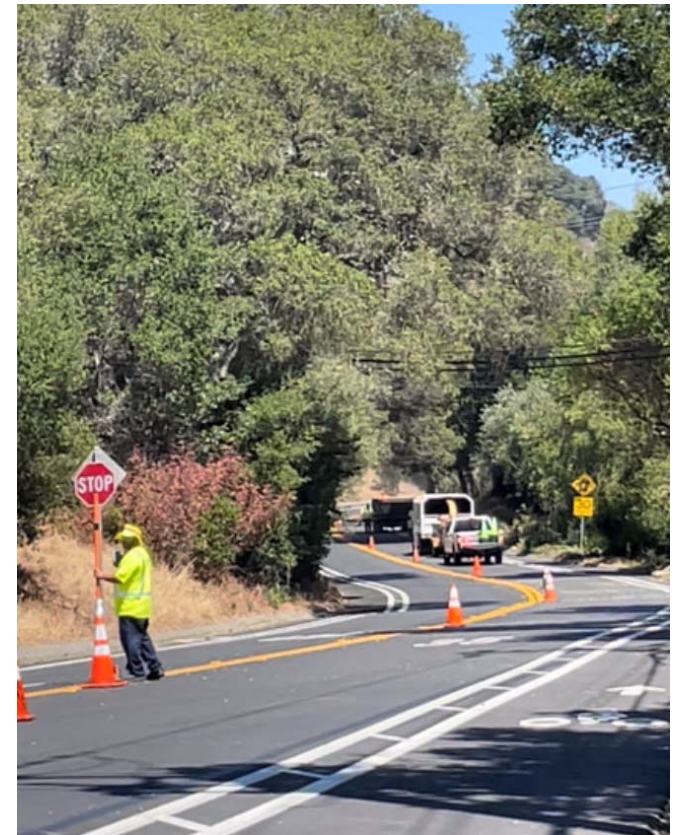


Using Measure X Services

(Direct residents' requests for vegetation management)

\$200,000:Match to receive \$600,000 from Measure X

(Requires 10% to 50% Contribution)



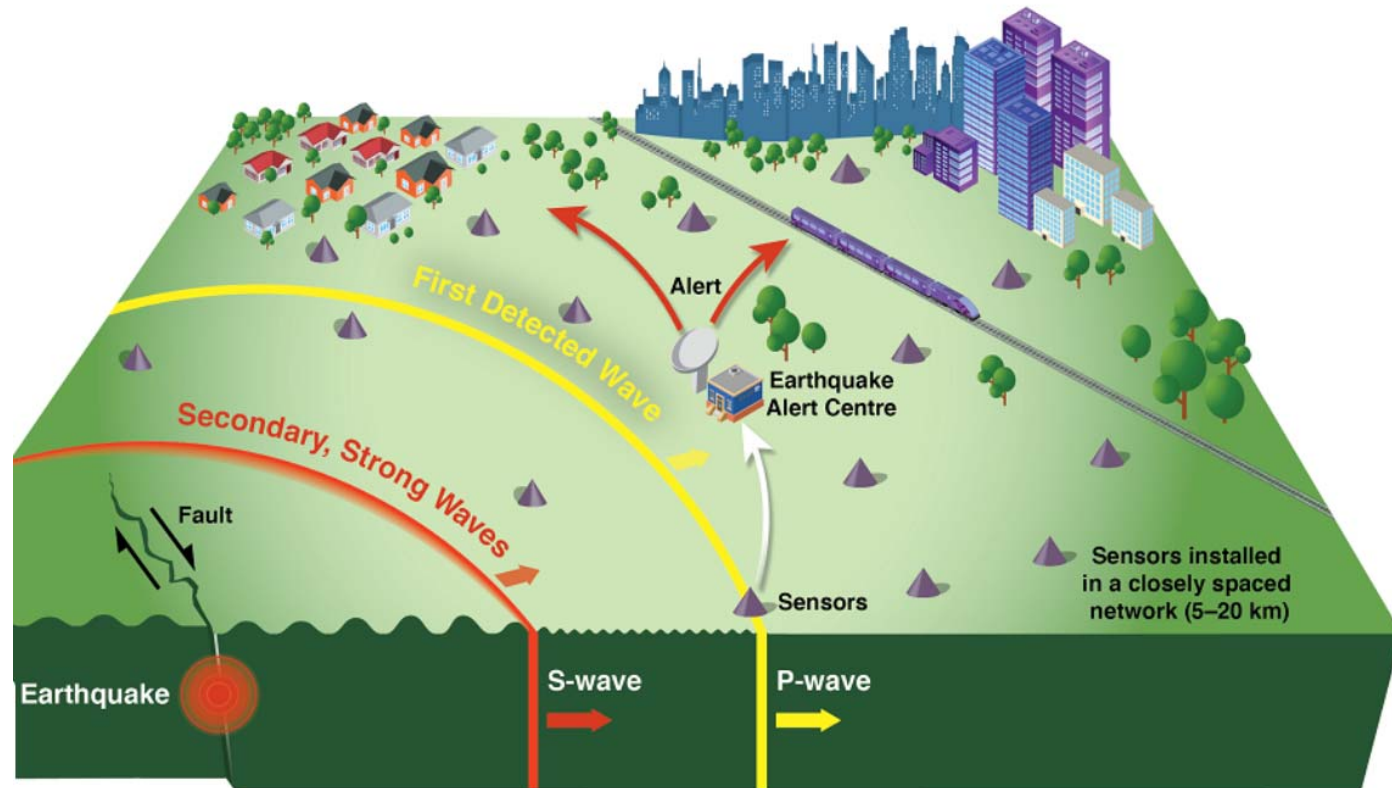
Earthquake Early Warning

\$20,000 per station, Total \$120,000

Fire Stations

Have enough time to
avoid catastrophic
damage

- 1) Open FS gates immediately
- 2) Alert Firefighters



Request to City Council:

I) Discuss Funding Sources To Address Immediate Needs

- **Public Works:**
 - Fuel Reduction \$300,000
 - **Fire Department:**
 - Citywide Public Disaster Preparedness Study & Planning \$400,000
 - Fire Boat \$250,000
 - Earthquake Warning: Open 6 Fire Stations' Gates & Warn Firefighters \$140,000
- Total \$1,090,000**

An aerial photograph showing a city with a grid street pattern and a large body of water. The city is built on a peninsula or near a large bay. The water is a deep blue, and the city buildings are a mix of brown and grey. In the background, there are more landmasses and a hazy horizon under a clear sky.

**II) Direct City Manager To:
Identify Possible
Sources of Budget and Timeline
To Address All Other Needs**

An aerial photograph of Richmond, Virginia, showing the city's layout, the James River, and the Chesapeake Bay. The city is densely packed with buildings and roads, with a prominent highway interchange visible in the lower right. The water is a deep blue, and the surrounding landscape is a mix of urban and natural areas.

The City of Richmond's Most Vital & Essential Services:

Public Safety

Questions?