

# Clinton Circle Park Revitalization

Friends of the Circle  
[fchf@googlegroups.com](mailto:fchf@googlegroups.com)

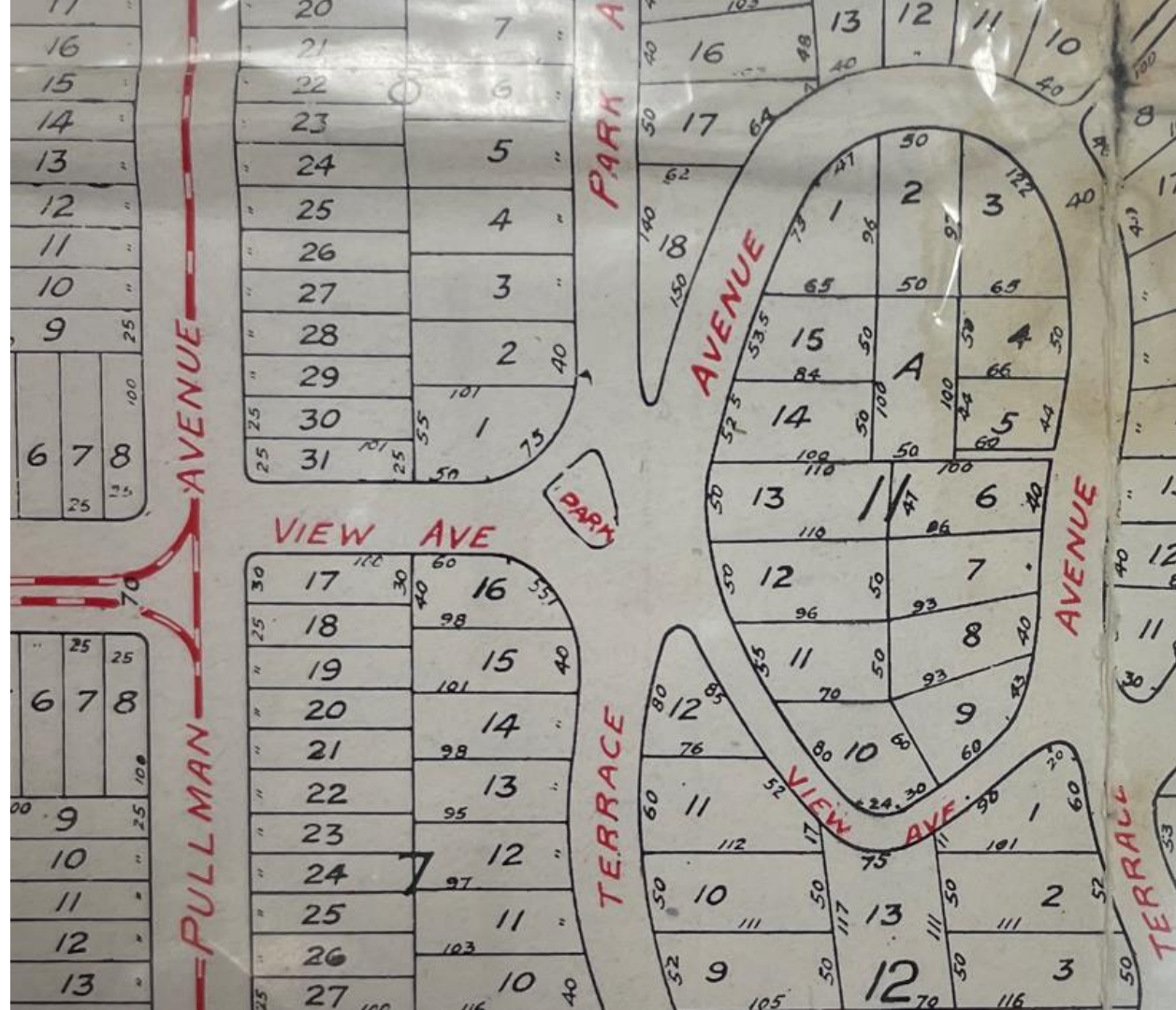
# The Circle

Clinton Ave. &  
36th St.



# History

BurgBros pamphlet for the Grandview Terrace subdivision





# The Fountain

The Circle in 1916



# Aerials

1948



# Aerials

1959



# Aerials

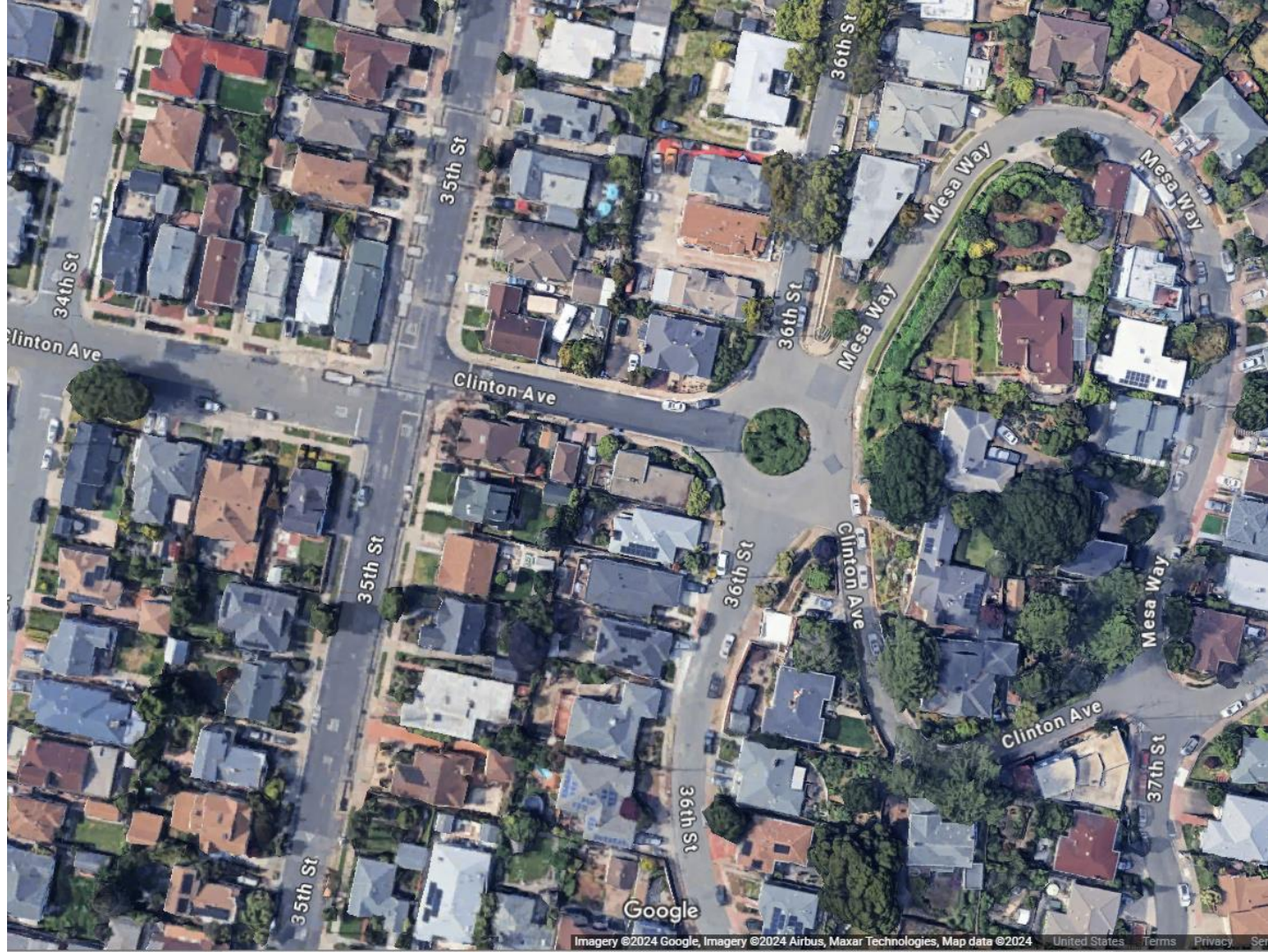
1981





# Aerials

2024





# Friends of the Circle

Formation at Burg Park in 2023



# Gathering Community Input

Posted Flyers

Social Media

Google Forms

Email Group

Community Events





# Working with City Staff

Site Limitations

Requirements





# Community Driven Design

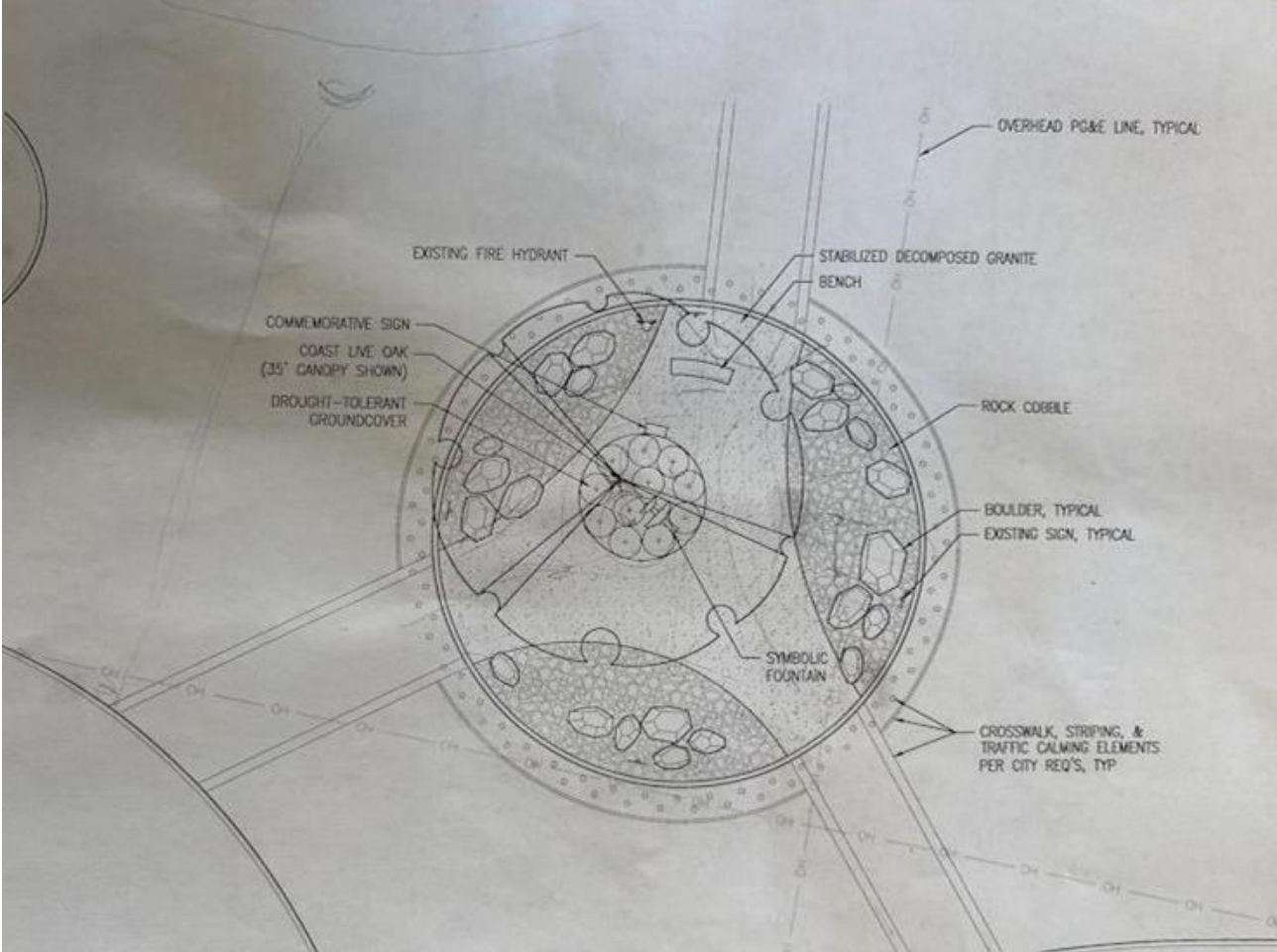
The plan incorporates the items and themes from the received feedback

The limitations and constraints of the site were factored into the design

Rebuilding a working fountain was decided to be too costly

# Drafting a Plan

Working with an architect



# Selecting Plants

Plants for the Clinton circle need to be drought tolerant and fill in the space in order to suppress weeds.

These plants may not require any supplemental watering after planting, if planted in the fall.



# California Native Plants

Silver Bush Lupine





# California Native Plants

Salvia 'Bee's Bliss'





# California Native Plants

## Hummingbird Sage





# California Native Plants

Blueblossom ceanothus



# California Native Plants

Douglas Iris





# California Native Plants

California Coffeeberry





# California Native Plants

Coast Live Oak



# Cost

Estimated to be around \$45,000 including shipping and labor.

Thank you!

