

**PUBLIC**

**APRIL 2025**

**ABATEMENT UPDATE**

**MAY 27, 2025**



## NEIGHBORHOOD DUMPSTER DAYS (3)

- CARRIAGE HILLS NOTH & SOUTH
- CASTRO HEIGHTS
- IRON TRIANGLE/ATCHISON VILLAGE
- EASTSHORE
- PARKVIEW

28 DUMPSTERS – 60.18  
TONS)



## 124 SENIORS/DISABLED PERSONS ASSISTED (31.4 TONS)

- CARRIAGE HILLS NOTH & SOUTH
- CASTRO HEIGHTS
- IRON TRIANGLE/ATCHISON VILLAGE
- EASTSHORE
- PARKVIEW







## ILLEGAL DUMPING

-5<sup>th</sup> St and Bissell Ave

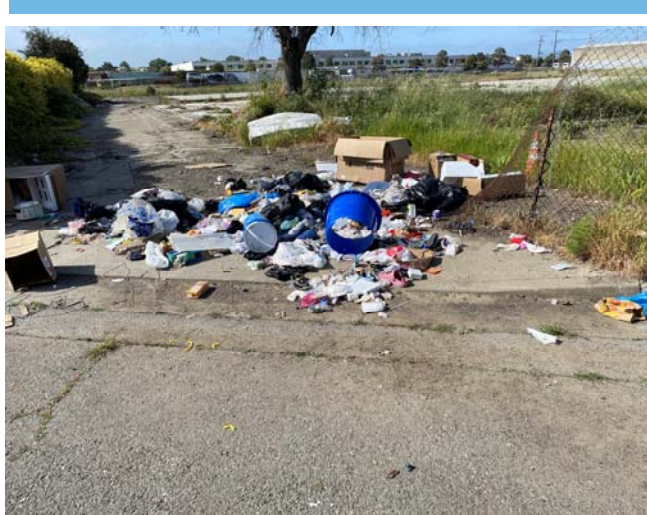


■ 231.33 TONS REMOVED

## ILLEGAL DUMPING

**SOUTH ST. AND BECK AVE  
100 BLOCK OF 5<sup>TH</sup> ST.  
2000 BLOCK OF WRIGHT AVE.**

■ 1002 LOCATIONS







## ILLEGAL DUMPING: MATTRESSES, PAINT/OIL AND TIRES

MATTRESS – S 42<sup>ND</sup> ST. & CENTER AVE

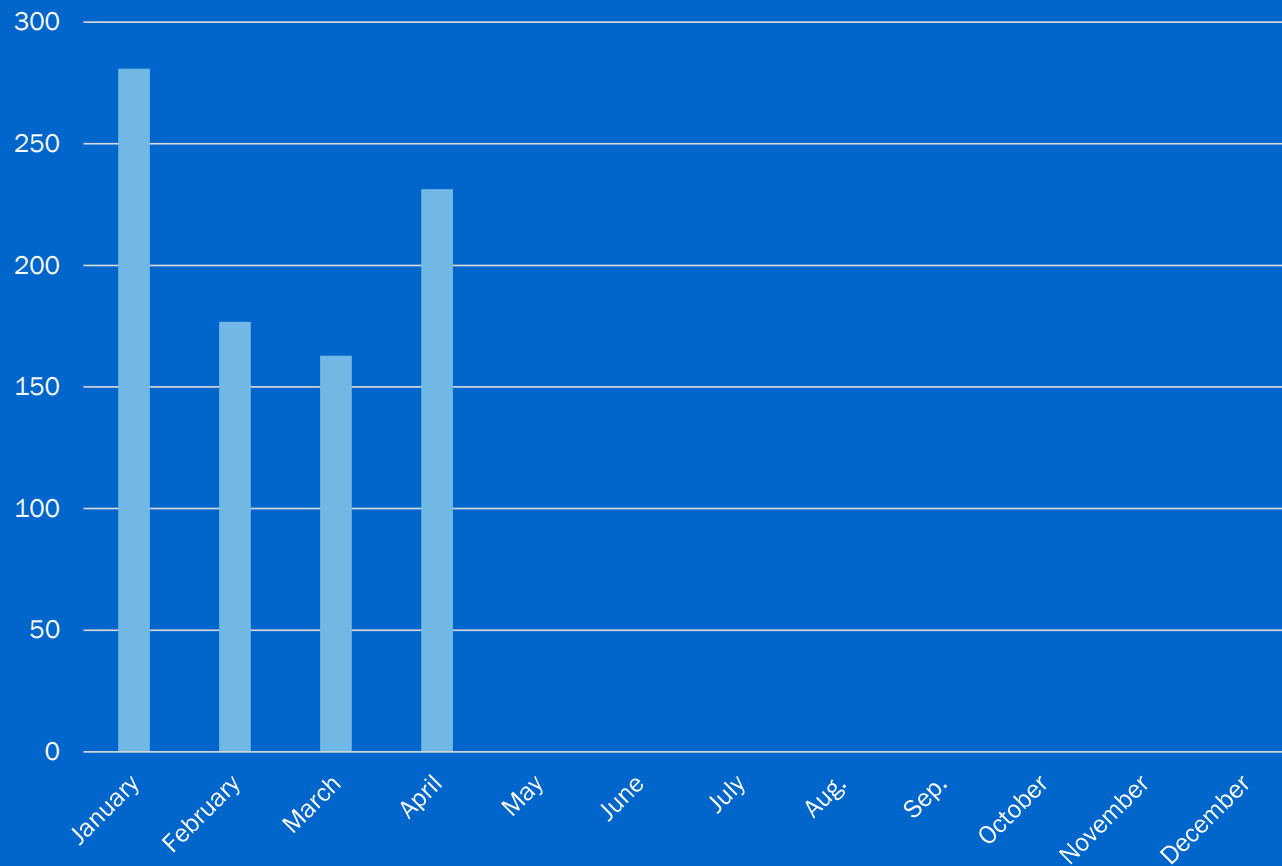
TIRES – HENSLEY ST

OIL/PAINT

- 257 MATTRESSES
- 150 GALLONS OF PAINT/OIL
- 293 TIRES

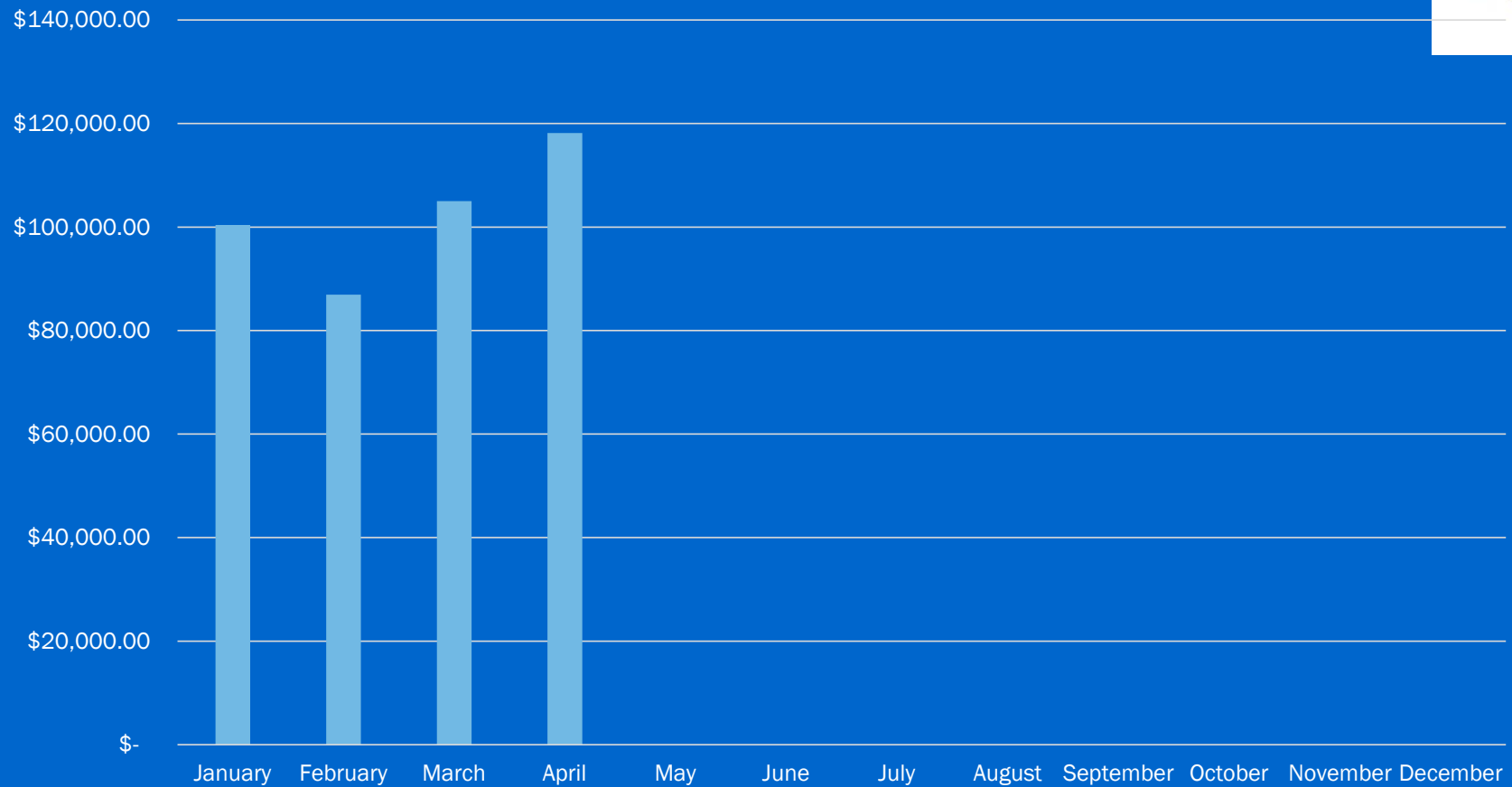
[illegible]

## ILLEGAL DUMPING TONNAGE COLLECTED PER MONTH - 2025





## ILLEGAL DUMPING TOTAL COST PER MONTH – 2025\*

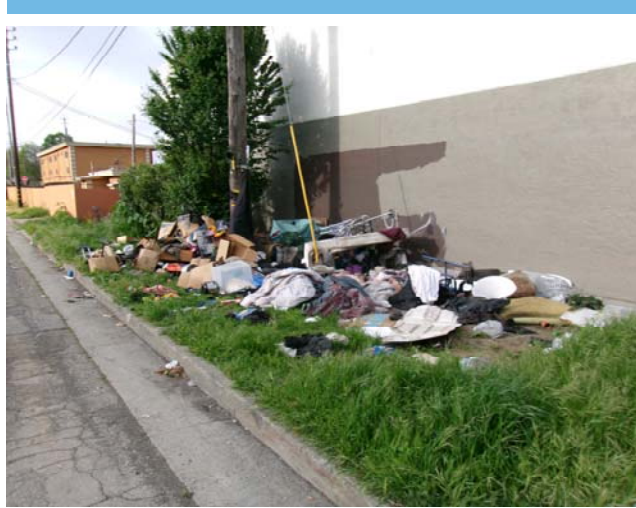


\*Includes Labor and Equipment

# ENCAMPMENT ABATEMENT (21)

-DEL CAMINO & LANDCASTER  
04/10/25

■ 32.74 Tons removed





## ENCAMPMENTS ABATEMENT

-HOFFMAN & S. 34<sup>TH</sup> ST. – 4/04/2025

-KEARNEY UNDERPASS - 3-11-2025



## RECREATIONAL VEHICLES DISMANTLING

Checker's Tow Yard – Two (2) Recreational Vehicles, Two (2) Cars,  
and one (1) Boat Dismantled



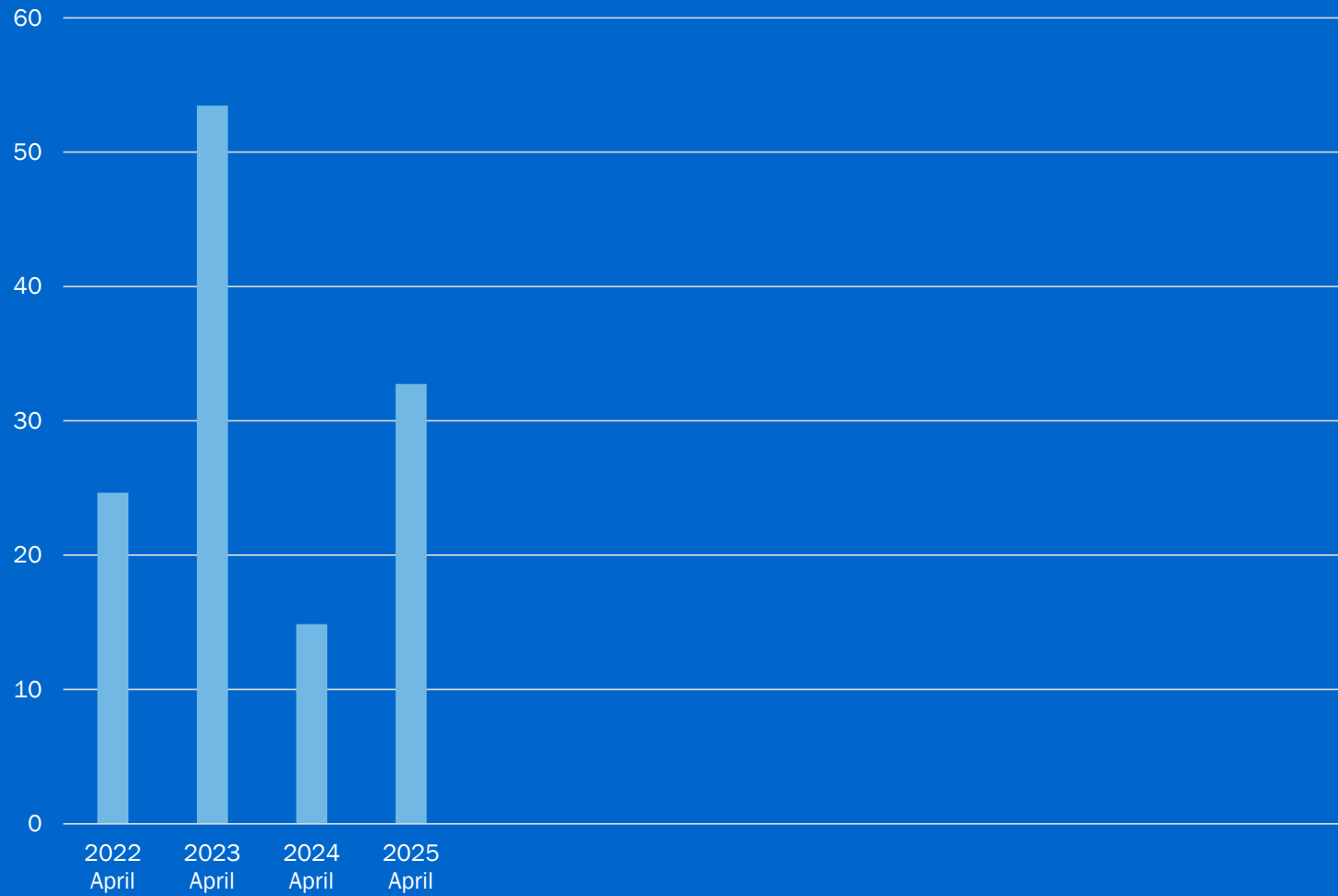


# RECREATIONAL VEHICLES DISMANTLING

3 Recreational Vehicles, 2 Cars and 1 Boat Dismantled 2025



## ENCAMPMENTS TONNAGE COLLECTED PER MONTH



# GRAFFITI REMOVAL



-San Pablo Ave I-80 Underpass— April 14, 2025



264 Tags Removed  
132 Locations

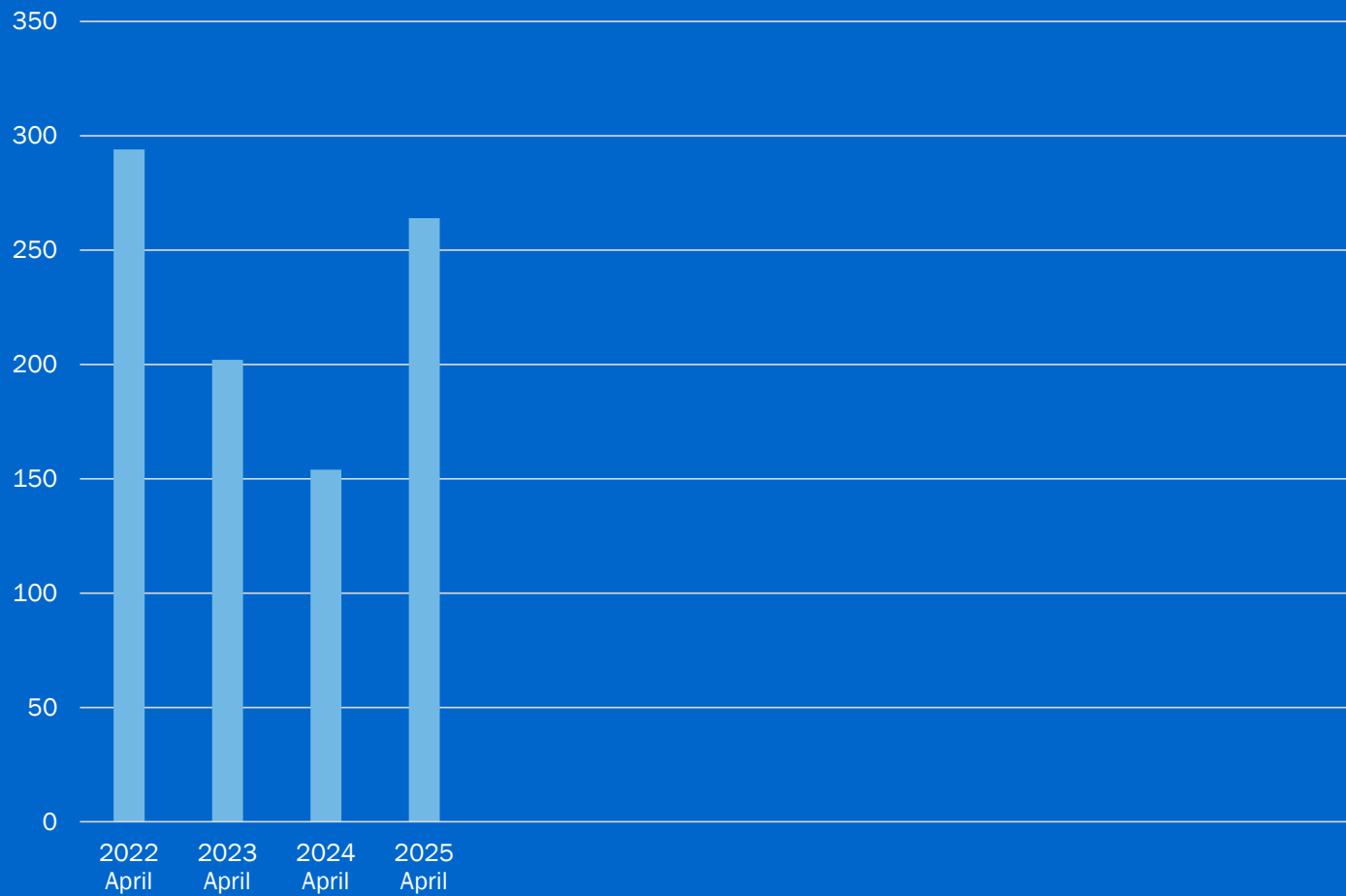
# GRAFFITI REMOVAL

15<sup>th</sup> St. and Cutting Blvd. — April 7, 2025





## GRAFFITI TAGS REMOVED PER MONTH





April Stats					YTD		
	2023	2024	2025		2023	2024	2025
<b>Illegal Dumping (Tons)</b>	228.7	194.45	231.33		871.85	900.35	851.73
• Mattresses	188	219	257		798	908	902
<b>Dumpster Days (Tons)</b>	51.81	72.05	91.58		134.99	221.06	205.02
*Number of Events	3	4	3		7	10	7
<b>Encampments</b>	7	7	21		22	38	64
• Tons	53.46	14.87	32.74		114.26	55.93	190.26
<b>Graffiti Tags</b>	202	154	264		848	627	968

## WEED ABATEMENT (14 LOCATIONS)

*Richmond Parkway*



## WEED ABATEMENT (4)

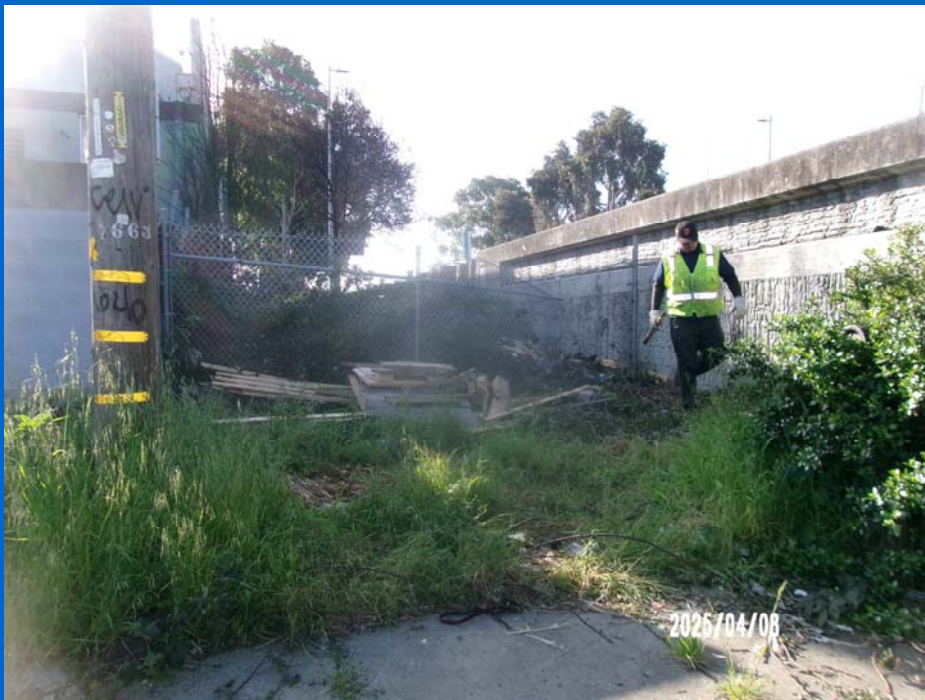
S37th and Stege Ave.





# WEED ABATEMENT

Dead end of Factory St. @ Richmond Parkway





## MISCELLANEOUS:

**ALLEYWAYS – NORTH & EAST**  
**WALKWAYS – CENTRAL**  
**UNDERPASS**







## MISCELLANEOUS:

BAY TRAIL: RICHMOND  
PARKWAY

PATHWAY: SWANS WAY –  
NORTH & EAST



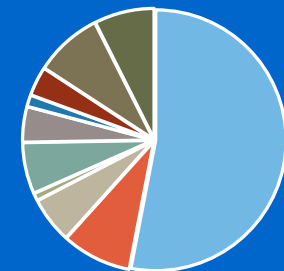
## ABATEMENT STAFF HOURS

Illegal Dumping	1400
Encampment Removal	228
Graffiti Abatement	152
North Richmond Mitigation	25
Weeds/Brush Abatement	168
Fencing, Private Board Ups & Clean-Ups	38
Seniors Assistance	96
Leave	196
Management	221
<u>Transport/Misc.*</u>	<u>116</u>
<b>Total</b>	<b>2640</b>

Transport/Misc. includes staff hours for removal of debris from vehicles, Point Molate trash removal, and hazardous waste facility disposal.



April Hours



- Illegal Dumping
- Encampment Removal
- Graffiti Abatement
- North Richmond Mitigation
- Weeds/brush Abatement
- Transport/Misc\*
- Board Ups/Clean Ups/Fencing
- Seniors Assistance
- Management





## PARTNERSHIPS



**CORE**  
COORDINATED OUTREACH REFERRAL,  
ENGAGEMENT  
(Partnership in Encampment Removals)

