

# **Bay Area Carbon Injection & Pipeline Project**

## **Overview & Community Concerns**

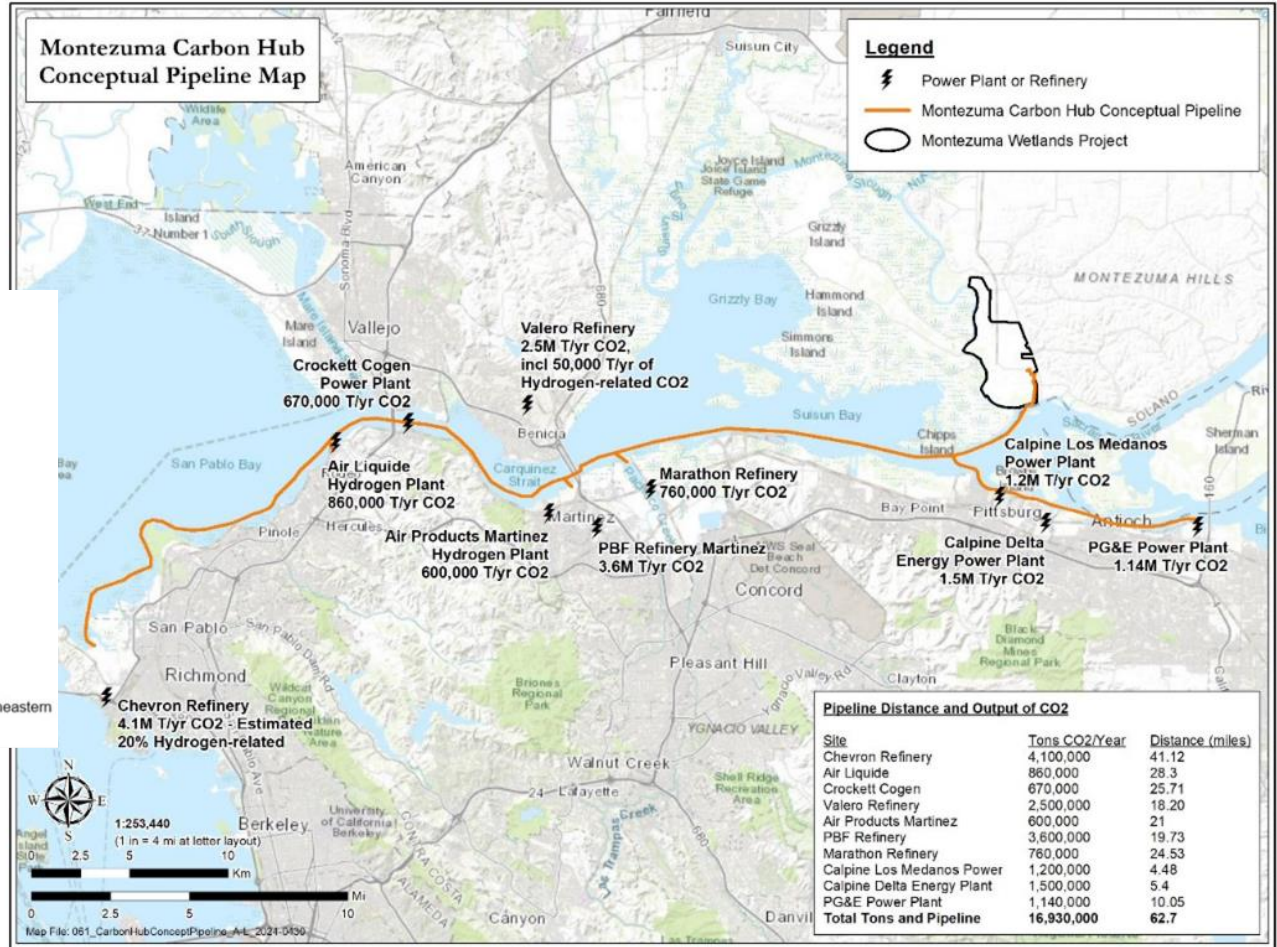
**Richmond City Council, April 2026**

# Getting Situated

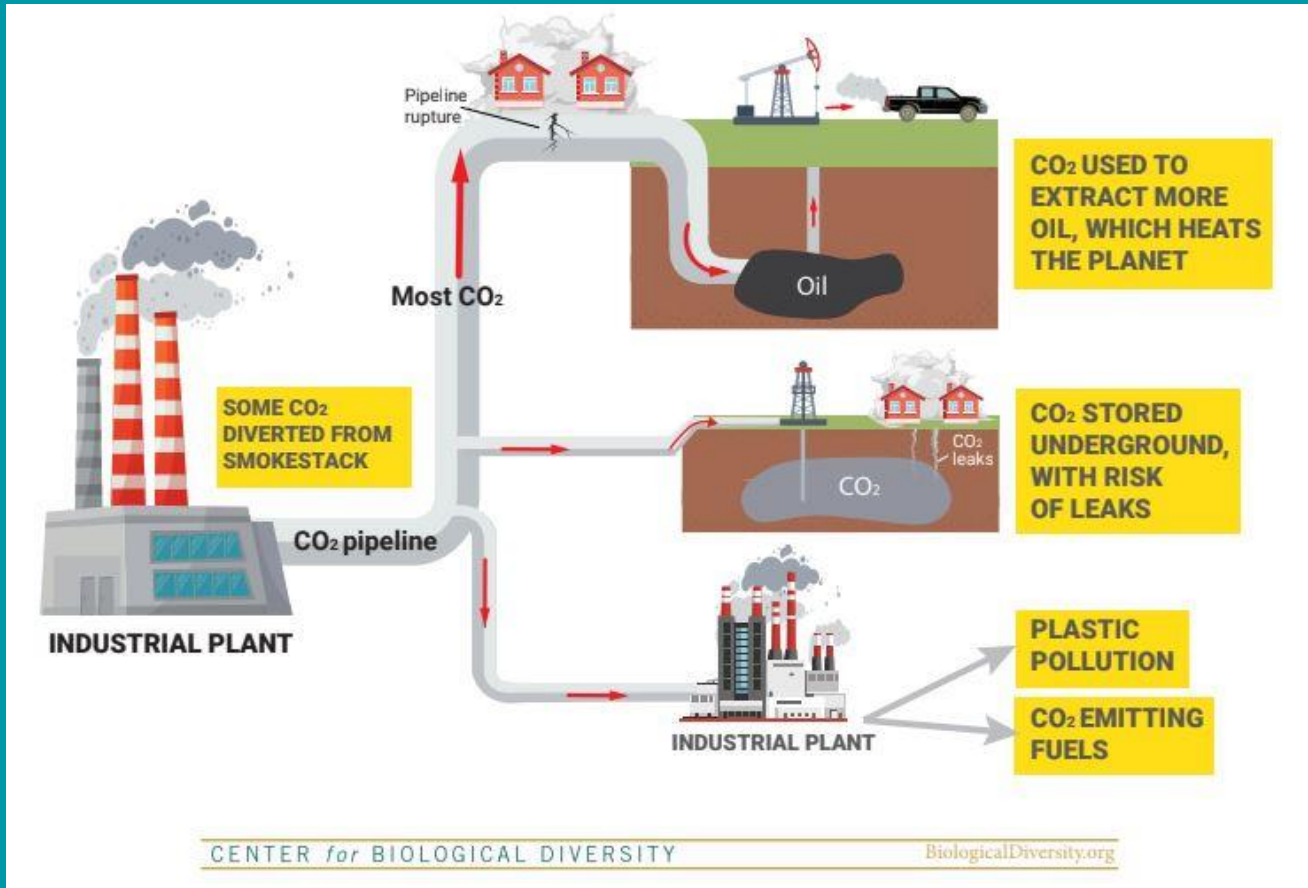


Figure 1: The location of the Suisun Marsh study area. The Marsh is situated in the northeastern reaches of San Francisco Bay, just west of the Delta, in Solano County.

## FIGURE A-2. REGIONAL FACILITIES CO<sub>2</sub> MAP & POSSIBLE PIPELINE ROUTE (UPDATED DRAFT)



# What is Carbon Capture & Storage?



# Ecological Impacts to Delta



- **Leaks can produce Carbonic Acid**
- **Carbonic Acid creates dead zones**
- **Dead zones can stretch for miles**
- **Threatened species include: Delta Smelt, CA Least Tern, Harvest Mouse**
- **Unique disaster response for CO2 leak in Delta**

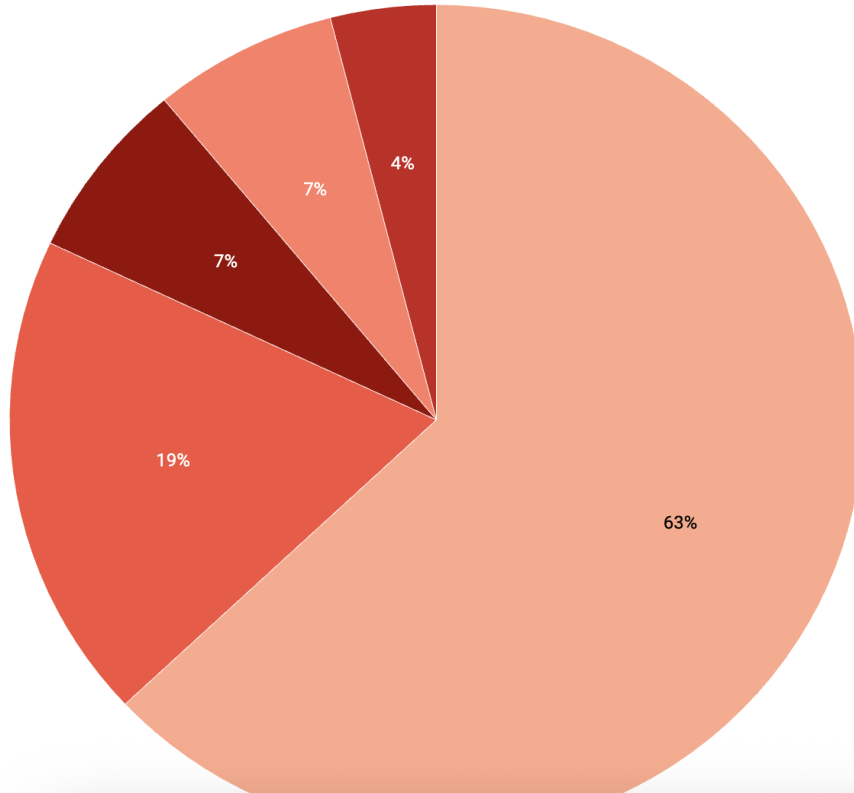
# Pipeline Leaks & Health Risks



- **Compressed CO<sub>2</sub> is denser than oxygen**
- **Forces oxygen out of the air leading to asphyxiation**
- **300 evacuated, 45 hospitalized after CO<sub>2</sub> pipeline leak in Satartia, Mississippi**
- **1700 died in Cameroon after natural CO<sub>2</sub> leak**

## PM2.5 emissions sources in Richmond-San Pablo

Chevron (63%) Small sources (fireplaces, dry-cleaning facilities, industrial boilers, toxic waste incineration) (19%)  
Off-road mobile sources (trains, ships, aircraft, heavy equipment) (7%) On-road mobile sources (motorcycles, cars, trucks) (7%)  
Other permitted industries (factories, power plants, gas stations) (4%)



## Increase in local pollutants such as:

- PM2.5
- Nitrogen oxides (NOx)
- Ammonia
- Sulfur dioxide
- Hydrogen cyanide
- Sulfuric acid
- Hydrogen sulfide

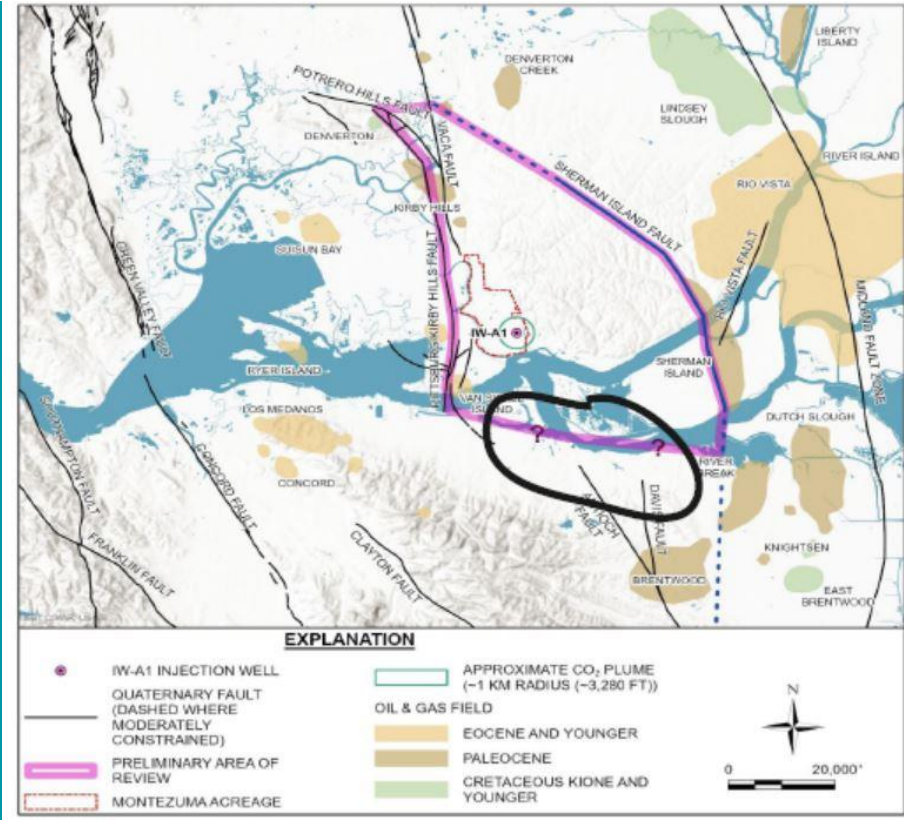
Google

Chart: Cityside • Source: Bay Area Air Quality Management District, March 2024 • Created with Datawrapper

<https://richmondside.org/2024/08/05/richmond-ca-air-pollution-sources-chevron-chemtrade-freeways/>

# Where Are We in the Regulatory Process?

- Key permitting agencies: EPA Region 9 & Solano County
- Injection well permit application submitted in November 2023
- EPA deemed application incomplete in summer 2024
- Developer was asked to provide additional geologic info after drilling test well
- As of December 2024, developer has not applied for test well permit



# Summary: Threats to Richmond

- Proximity of new pipeline to communities
- Pipeline leaks & catastrophic failure scenario
- Potential for increased pollutants from refinery
- All risk, no reward!

**FIGURE A-2. REGIONAL FACILITIES CO<sub>2</sub> MAP & POSSIBLE PIPELINE ROUTE (UPDATED DRAFT)**

